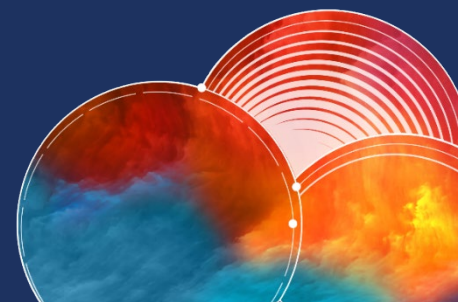


Netskope Health Assessment

Optimize your Netskope technology, ensure your data and environment is secure, and understand next steps towards mitigating risk.



CHALLENGES WE ADDRESS



The Netskope Platform is Not Optimized

When the Netskope Platform is deployed, it is not always configured or optimized to meet the business need, and no plans are in place to get there.



Data Loss is Happening

Many organizations have difficulty leveraging custom or advanced Netskope capabilities such as Exact Data Matching, Fingerprinting, and Machine Learning Profiles.



Too Many Issues to Manage

Platform owners are plagued with issues and/or errors within the Netskope platform, including items such as excessive policy blocks, and excessive application or site outages.



Struggle to Show ROI

Business owners are often challenged by leadership to demonstrate a return on investment for their Netskope purchase in a short period of time, but have trouble achieving and quantifying.

SERVICES WE PROVIDE

- **Current state analysis** of your Netskope platform deployment and program.
- **Assessment** of the following domains: client and steering configurations, UI settings, integrations, and inline policies.
- Two **targeted stakeholder workshops** to understand the business requirements and technology vision.
- Two **working group interviews** to understand day-to-day operations.

OUTCOMES YOU MAY EXPECT

- **Summary of key findings** that are documented so that you may clearly understand the current state of the technology and program.
- Summary of **recommendations and high-level roadmap** to assist with getting on the correct path to realize the full value of your Netskope investment.

ABOUT CLOUDRISE

Cloudrise is a data-centric services firm focused on securing organizations' data—wherever it resides. We help organizations elevate their data protection, privacy, and cloud security programs, tailoring them to meet specific business needs. Cloudrise draws on more than two decades of experience delivering data-centric advisory, implementation, optimization, and managed services.

